

Pacific States Marine Fisheries Commission

John Day Dam Condition Monitoring Weekly Report, #22-19

Report Period: 8/6 – 8/12, 2022

Project Leader: Rick Martinson

Prepared By: Gregory Kovalchuk and Aaron Young



SECTION 1. River Flow and Sampling Results

	Min	Max	Mean		
			Current	Last Week	2021
A. River Flow	130.3	190.4	160.4	169.3	127.5
B. Powerhouse 1	83.4	122.1	102.9	109.0	82.0
C. Spill (kcfs)	45.6	66.8	56.2	59.5	44.4
% of River Flow	35.0	35.1	35.0	35.1	34.8
D. Water Temp *	71.1	71.4	71.3	71.7	73.1
E. % Saturation *	106.4	107.5	107.0	110.3	104.6

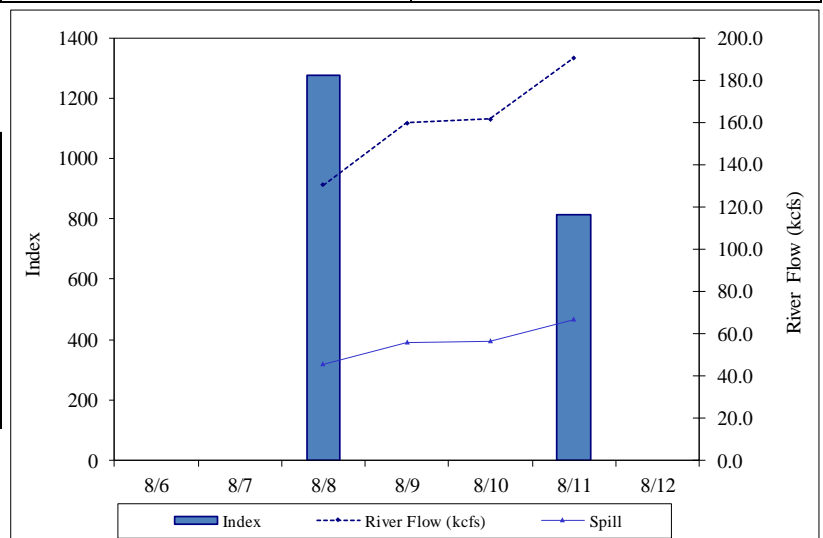
* TDG and water temp data from USGS forebay sensors.

% SAMPLE COMPOSITION	This Week	Last Week
YEARLING CHINOOK	0.0%	0.0%
SUBYEARLING CHINOOK	99.5%	100.0%
CHINOOK FRY	0.0%	0.0%
UNCLIPPED STEELHEAD	0.0%	0.0%
CLIPPED STEELHEAD	0.0%	0.0%
COHO	0.0%	0.0%
COHO FRY	0.0%	0.0%
SOCKEYE	0.5%	0.0%

YEARLING CHINOOK							SUBYEARLING CHINOOK					COHO				
End Date	Sample Rate	# Smpld	% Desc	% Mort	# Coll	Index	# Smpld	% Desc	% Mort	# Coll	Index	# Smpld	% Desc	% Mort	# Coll	Index
8/6	12.3%															
8/7																
8/8		0	0.0	0.0	0	0	101	2.0	0.0	815	1,261	0	0.0	0.0	0	0
8/9																
8/10	20.0%															
8/11		0	0.0	0.0	0	0	105	0.0	0.0	525	812	0	0.0	0.0	0	0
8/12																
Weekly		0	0.0	0.0	0	0	206	1.0	0.0	1,340	2,073	0	0.0	0.0	0	0
Season to date		4,676	2.3	0.1	47,784	114,702	3,732	1.6	0.1	94,610	167,175	484	1.9	0.2	5,780	13,654

UNCLIPPED							STEELHEAD					CLIPPED					SOCKEYE				
End Date	Sample Rate	# Smpld	% Desc	% Mort	# Coll	Index	# Smpld	% Desc	% Mort	# Coll	Index	# Smpld	% Desc	% Mort	# Coll	Index	# Smpld	% Desc	% Mort	# Coll	Index
8/6	12.3%																				
8/7																					
8/8		0	0.0	0.0	0	0	0	0.0	0.0	0	0	1	0.0	0.0	10	15					
8/9																					
8/10	20.0%																				
8/11		0	0.0	0.0	0	0	0	0.0	0.0	0	0	0	0.0	0.0	0	0					
8/12																					
Weekly		0	0.0	0.0	0	0	0	0.0	0.0	0	0	1	0.0	0.0	10	15					
Season to date		333	2.1	0.0	4,386	11,063	1,123	6.5	0.2	12,088	29,055	1,142	3.2	0.2	24,151	60,007					

TOTAL						
End Date	Sample Rate	# Smpld	% Desc	% Mort	# Coll	Index
8/6	12.3%					
8/7						
8/8		102	2.0	0.0	825	1,276
8/9						
8/10	20.0%					
8/11		105	0.0	0.0	525	812
8/12						
Weekly		207	1.0	0.0	1,350	2,088
Season to date		11,490	2.5	0.1	188,799	395,655



Notes: Condition percentages are calculated from sample numbers.

Subyearling chinook and coho include fry.

	Pacific Lamprey						Western Brook		
	Macrophthalmia			Ammocoetes			Ammocoetes		
End Date	# Smpld	% Mort	# Coll	# Smpld	% Mort	# Coll	# Smpld	% Mort	# Coll
8/6									
8/7									
8/8	0	0.0	0	1	0.0	10	0	0	0
8/9									
8/10									
8/11	0	0.0	0	0	0.0	0	0	0	0
8/12									
Weekly	0	0.0	0	1	0.0	10	0	0	0
Season to date	320	0.3	4,161	42	0.0	517	0	0	0

SECTION 2. Smolt and Lamprey Condition Monitoring Summary

Subyearling Chinook This Week Last Week		DESCALING			INJURY					Other Conditions			
	SAMPLE #	3-19%	>20%	Pred. Desc.	BODY	EYE	HEAD	OP	FIN	POPEYE	PINK FIN	Fin Discolor.	FIN HEM
	206	3.4%		1.0%	0.5%	0.5%			3.4%				8.7%
	209	5.3%	1.0%	1.4%					2.4%				5.7%

	SAMPLE #	DISEASE						PREDATION			
		Columnaris	FUNGUS	BKD	PARASITES	DEFORMITY	EYE HEM	BIRD	FISH	LAMPREY	OTH
This Week	206				20.9%			1.9%	2.4%		
Last Week	209				33.5%			1.0%	3.3%		

[illegible]

SECTION 3. Incidental Summary

	Bass Largemouth	Bass Smallmouth	Bluegill and Pumpkinseed	Bullhead	Carp	Catfish, Channel	Chiselmouth	Crappie species
This Week	0	4	0	0	0	0	0	0
Season to Date	1	28	11	1	2	1	0	6

	Dace - Longnose	Dace - Speckled	Chinook Jack	Goldfish	Lamprey Adult	Northern Pikeminnow	Peamouth	Perch Yellow
This Week	0	0	0	0	0	0	0	0
Season to Date	0	0	1	1	1	1	0	362

	Redside Shiner	Sand Roller	Sculpin species	Stickleback 3 spine	Sucker species	Shad Adult	Shad Juvenile	Sturgeon White
This Week	0	0	0	0	0	1	2,105	0
Season to Date	0	0	9	6	1	4	2,202	0

	Trout Bull	Trout Cutthroat	Trout Rainbow	Walleye	Whitefish Mountain	Siberian Prawn	Chum Salmon	Banded Killifish
This Week	0	0	0	0	0	0	0	0
Season to Date	0	0	0	31	6	122	0	5

SECTION 4. Facility Operations

Condition Monitoring at John Day Dam is adhering to the warm river water temperature sampling mode. Samples will continue to target 100 of the predominant out-migrant smolt, currently Subyearling Fall Chinook (99.5% composition), on Mondays and Thursdays until daily average river water temperatures fall below 69.5 deg. F. Samples are taken from the Juvenile Bypass System between approximately 0700 and 1300 hrs and the Collection, Index, and River flow estimates and averages are for the sample period only. Debris at the separator bars and in the sample holding tank was moderate for the week and consisted of a few sticks, plastic, and pieces of terrestrial and aquatic vegetation.

SECTION 5. Research

A genetic fin clip sample was collected from one Pacific Lamprey ammocoete during this report period.

SECTION 6. Pictures



Coho salmon smolt (*Oncorhynchus kisutch*), approximately 134mm fork length, exhibiting a descaled caudal peduncle. Sampled on 15 July, 2022 at the John Day Dam Smolt Facility.



Detail of descaled caudal peduncle from specimen above.